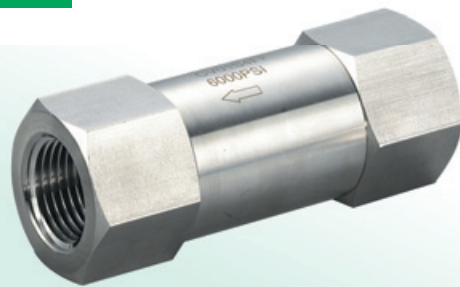


## Check Valve - CV01 Series

### Overview

- ▶ 316 stainless steel
- ▶ Poppet type
- ▶ Cracking pressure: 5 psi



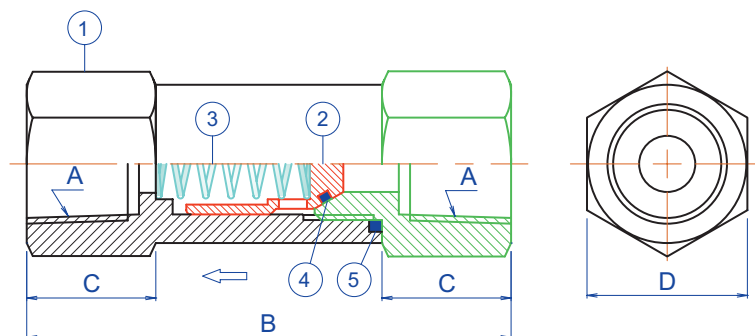
### Ordering Information

PART NO.	CONNECTIONS		MATERIAL	SEAT	MAX. W.P.
	INLET	OUTLET			
CV01S4	1/4"NPT-FEMALE	1/4"NPT-FEMALE	316 SS	HARD	6000psi
CV01S6	3/8"NPT-FEMALE	3/8"NPT-FEMALE	316 SS	HARD	6000psi
CV01S8	1/2"NPT-FEMALE	1/2"NPT-FEMALE	316 SS	HARD	6000psi

### Dimensions (mm)

Nominal Size A	B	C	D
1/4"NPT-F x F	68	16	7/8"
3/8"NPT-F x F	78	20	15/16"
1/2"NPT-F x F	86	23	1-1/8"

All dimensions shown in the catalogue are approximate and subject to change.



### Part Descriptions

Item	Descriptions	316 Valve
1	Body	316 S.S.
2	Poppet	316 S.S.
3	Spring	302 S.S.
4	O-Ring	Viton®
5	O-Ring	Viton®