

## High Pressure Ball Valve

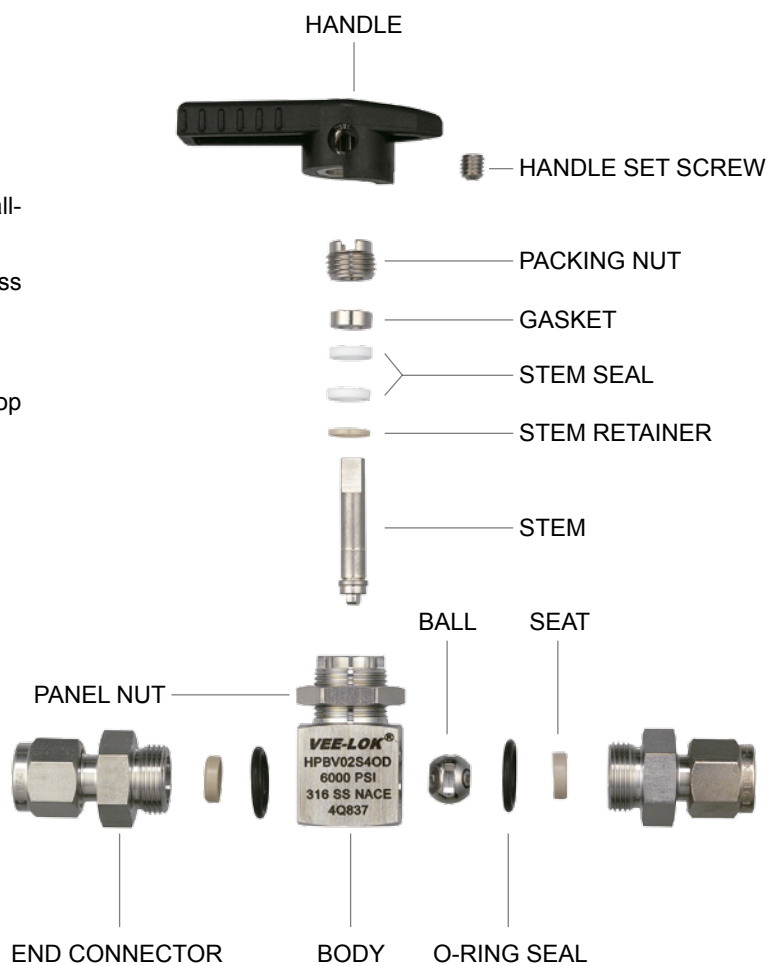
HPBV02 series



### Features

- Maximum working pressure:  
6000 psi (414bar) at 100°F (38°C)
- Working temperature:  
-65°F (-54°C) to 392°F (200°C)
- 316 SS mini ball valve overcomes limitation of install-  
ment space.
- A quick 1/4 turn on-off control of fluids used in process  
and instrumentation applications.
- 90 degree actuation operates with low torques.
- Straight through flow path for minimum pressure drop  
and bi-directional flow.
- Fine finished ball provides a positive seal.
- PEEK seat withstands high pressure circumstances.
- Panel mountable nut.

### Material of Construction



### Pressure Rating and Tubing Selection

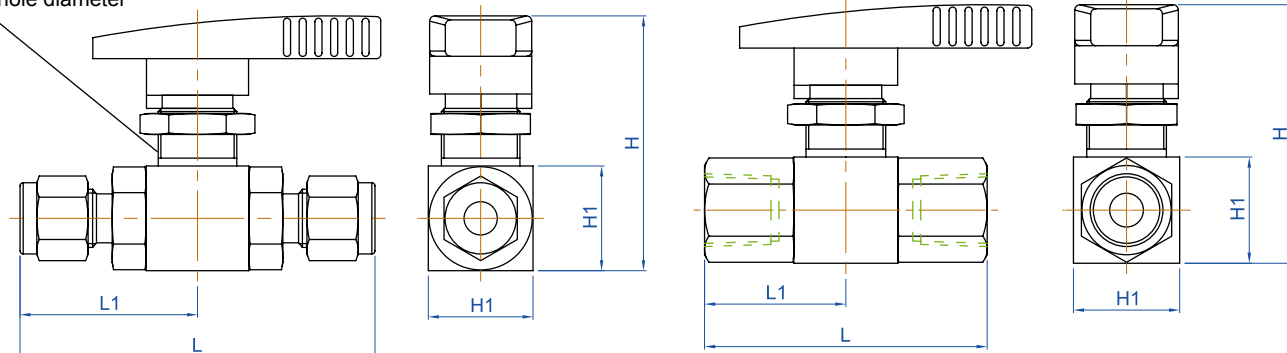
For working pressures of VEE-LOK tube ends, please refer to working pressure table found in tube fitting catalogue.

For working pressures of valves with pipe threads, please see catalogue of instrument pipe fittings.

Component	Valve Body Material 316 S.S.
Handle	ABS
Packing Nut	316 S.S./A276
Gasket	316 S.S./A276
Seal	PTFE
Retainer	PEEK
Stem	316 S.S./A276
End Connector	316 S.S./A479
Body	316 S.S./A479
Ball	316 S.S./A276
O-Ring Seal	VITON
Seat	PEEK

## Dimensions

T=max. panel thickness  
P=panel hole diameter



Ordering No.	End Connection		Orifice (bore)	Dimensions (mm)				P	T
	Inlet	Outlet		L	L1	H	H1		
HPBV02S2FF	1/8"NPT female	1/8"NPT female	5	53.2	26.6	47.5	20	15	6.5
HPBV02S4FF	1/4"NPT female	1/4"NPT female	5	53.2	26.6	47.5	20	15	6.5
HPBV02S6FF	3/8"NPT female	3/8"NPT female	7	61.6	30.8	54.2	25	18	8.5
HPBV02S8FF	1/2"NPT female	1/2"NPT female	9.5	96.53	48.27	64.87	32	18	8.5
HPBV02S2OD	1/8" O.D.	1/8" O.D.	5	62.8	31.4	47.5	20	15	6.5
HPBV02S4OD	1/4" O.D.	1/4" O.D.	5	67.8	33.9	47.5	20	15	6.5
HPBV02S6OD	3/8" O.D.	3/8" O.D.	7	76.8	38.4	54.2	25	18	8.5
HPBV02S8OD	1/2" O.D.	1/2" O.D.	9.5	89.53	44.77	64.87	32	18	8.5
HPBV02SM6OD	6mm O.D.	6mm O.D.	5	68.8	34.4	47.5	20	15	6.5
HPBV02SM8OD	8mm O.D.	8mm O.D.	5	70.4	35.2	47.5	20	15	6.5
HPBV02SM10OD	10mm O.D.	10mm O.D.	7	78.6	39.3	54.2	25	18	8.5
HPBV02SM12OD	12mm O.D.	12mm O.D.	9.5	89.53	44.77	64.87	32	18	8.5

All dimensions shown are for reference and subject to change without prior notice.

Sizes listed are standard. Other sizes and end types are available upon request. Refer to ordering information.

## Ordering Information

HPBV02	S		4		OD	
Series	Body Material		Size		End Connection	
HPBV02	S	316 S.S.	4	1/4"	F	female
			6	3/8"		NPT female-female
			8	1/2"	OD	VEE-LOK twin ferrule tube fittings
			M6	6mm		
			M8	8mm		
			M10	10mm		
			M12	12mm		